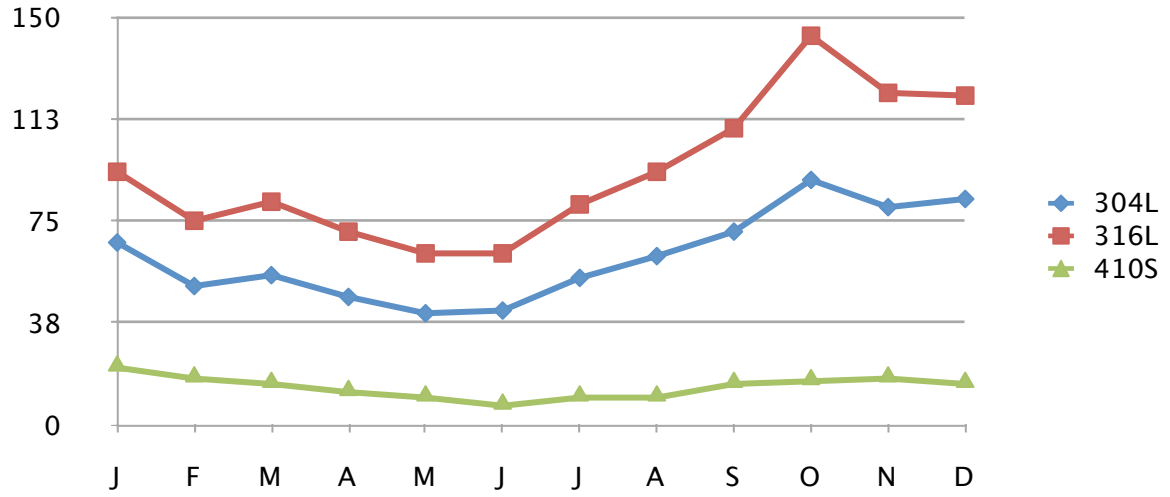


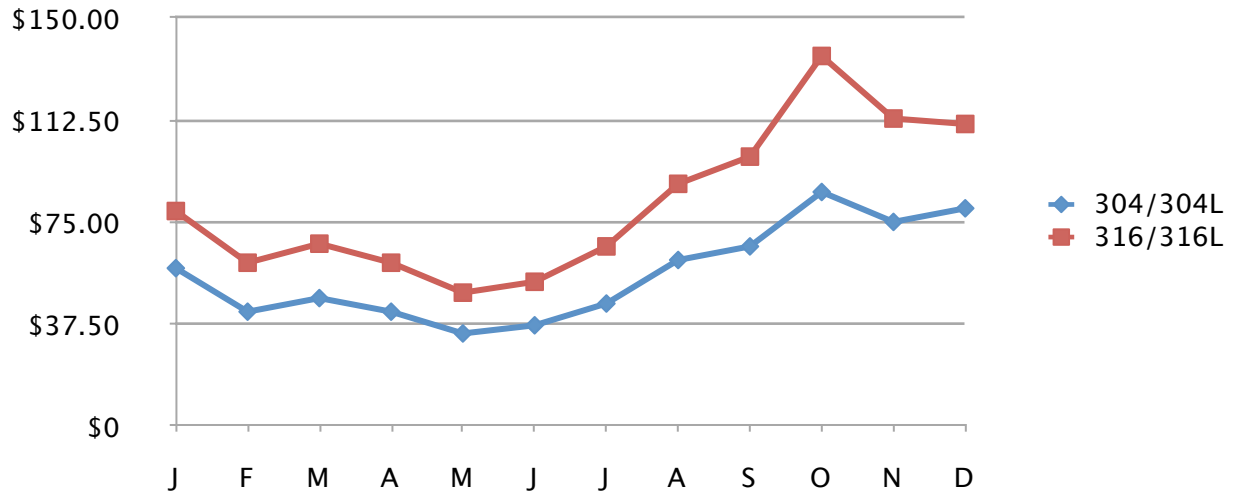


Alloy Surcharge Data for Flat Rolled Steel, Bar and Alloys for the years 2004 -2009
Please note that all prices, when listed, are listed in Canadian Funds

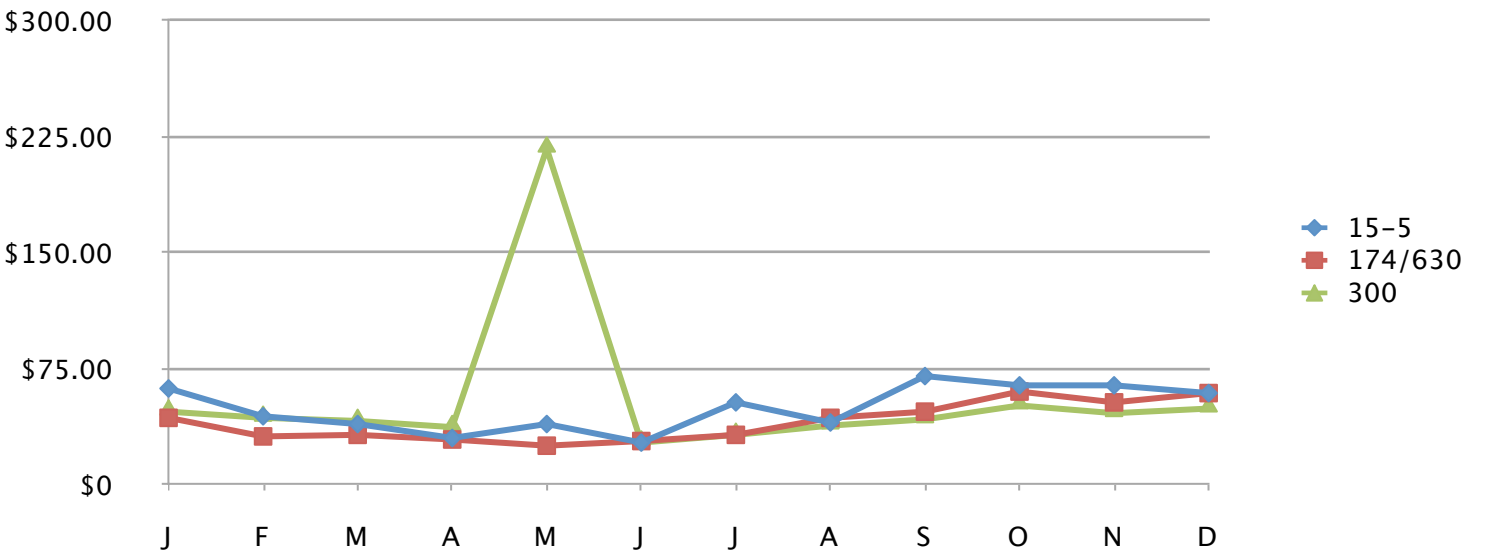
Flat Rolled Surcharge			
	304L	316L	410S
J	67	93	21
F	\$51.00	\$75.00	\$17.00
M	\$55.00	\$82.00	\$15.00
A	\$47.00	\$71.00	\$12.00
M	\$41.00	\$63.00	\$10.00
J	\$42.00	\$63.00	\$7.00
J	\$54.00	\$81.00	\$10.00
A	\$62.00	\$93.00	\$10.00
S	\$71.00	\$109.00	\$15.00
O	\$90.00	\$143.00	\$16.00
N	\$80.00	\$122.00	\$17.00
D	\$83.00	\$121.00	\$15.00



Bar Surcharge		
	304/304L	316/316L
J	\$58.00	\$79.00
F	\$42.00	\$60.00
M	\$47.00	\$67.00
A	\$42.00	\$60.00
M	\$34.00	\$49.00
J	\$37.00	\$53.00
J	\$45.00	\$66.00
A	\$61.00	\$89.00
S	\$66.00	\$99.00
O	\$86.00	\$136.00
N	\$75.00	\$113.00
D	\$80.00	\$111.00

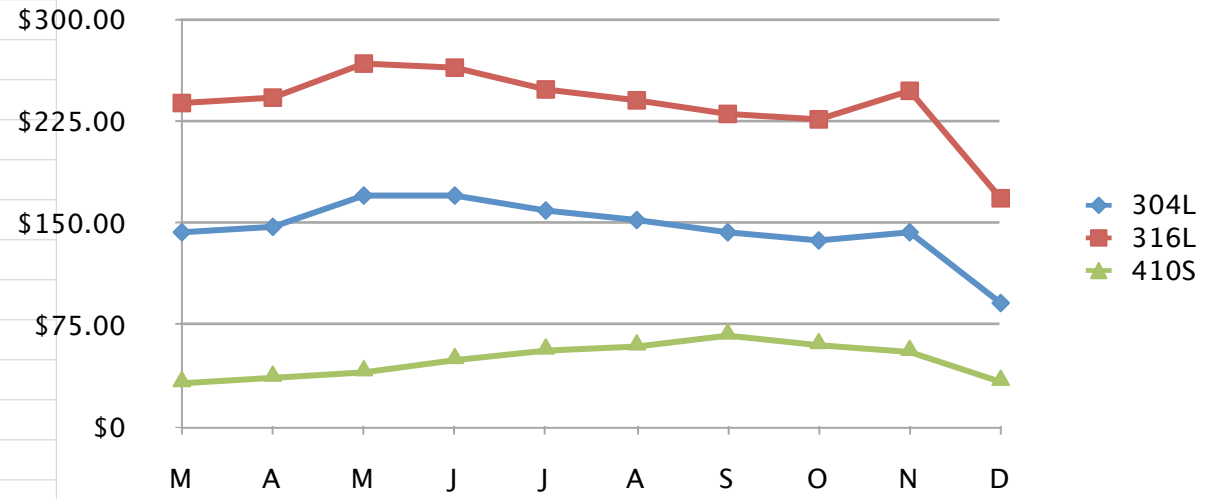


ALLOY SURCHARGES			
	15-5	174/630	300
J	\$62.00	43	47
F	\$44.00	\$31.00	\$43.00
M	\$39.00	\$32.00	\$41.00
A	\$30.00	\$29.00	\$37.00
M	\$39.00	\$25.00	\$217.00
J	\$27.00	\$28.00	\$27.00
J	\$53.00	\$32.00	\$32.00
A	\$40.00	\$43.00	\$38.00
S	\$70.00	\$47.00	\$42.00
O	\$64.00	\$60.00	\$51.00
N	\$64.00	\$53.00	\$46.00
D	\$59.00	\$59.00	\$49.00



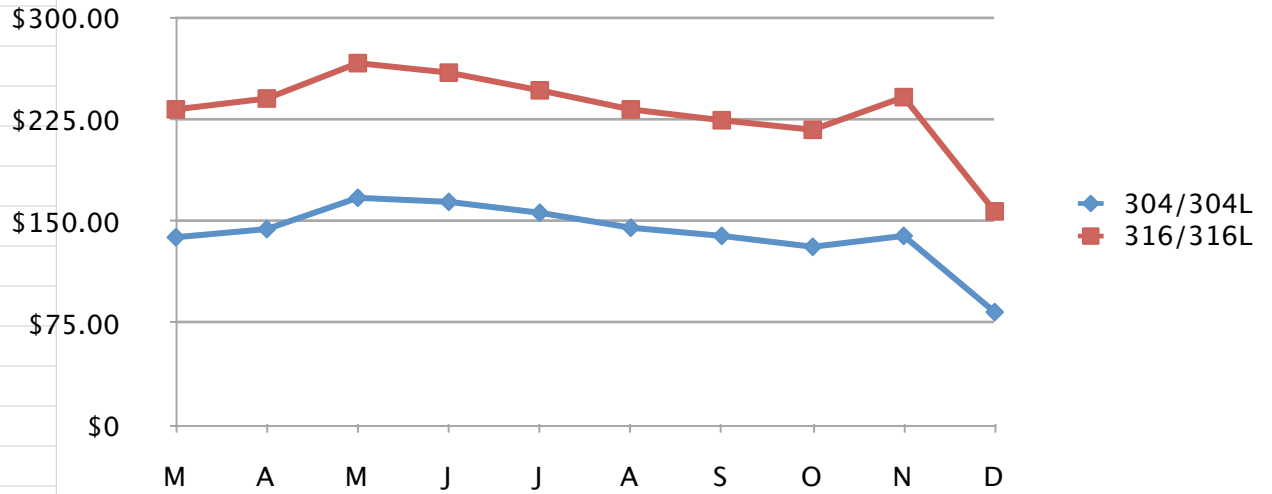
FLAT ROLLED SURCHARGE

	304L	316L	410S
M	\$143.00	\$238.00	\$32.00
A	\$147.00	\$242.00	\$36.00
M	\$170.00	\$267.00	\$40.00
J	\$170.00	\$264.00	\$49.00
J	\$159.00	\$248.00	\$56.00
A	\$152.00	\$240.00	\$59.00
S	\$143.00	\$230.00	\$67.00
O	137	226	60
N	\$143.00	\$247.00	\$55.00
D	\$91.00	\$168.00	\$33.00



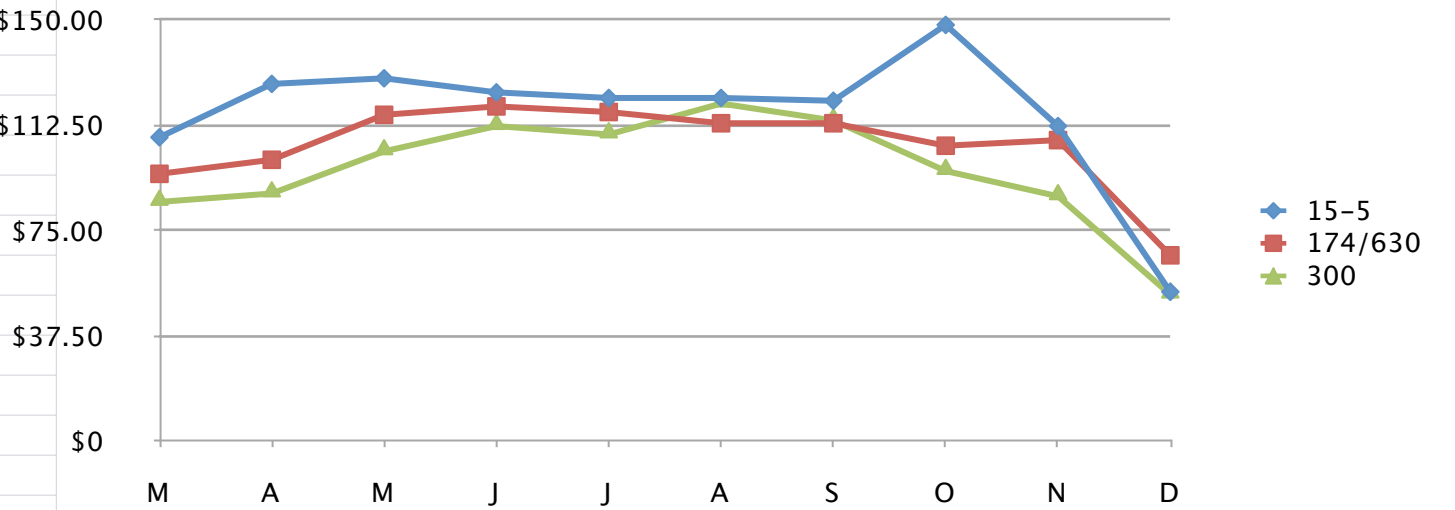
BAR SURCHARGE

	304/304L	316/316L
M	\$138.00	\$232.00
A	\$144.00	\$240.00
M	\$167.00	\$266.00
J	\$164.00	\$259.00
J	\$156.00	\$246.00
A	\$145.00	\$232.00
S	\$139.00	\$224.00
O	\$131.00	\$217.00
N	\$139.00	\$241.00
D	\$83.00	\$157.00

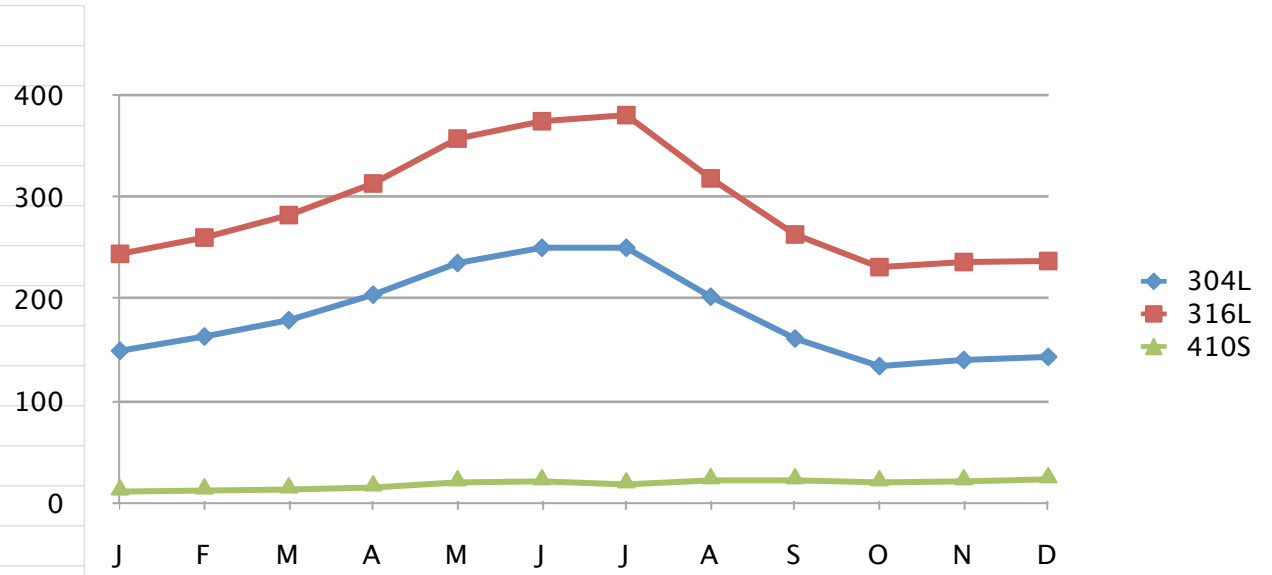


ALLOY SURCHARGE

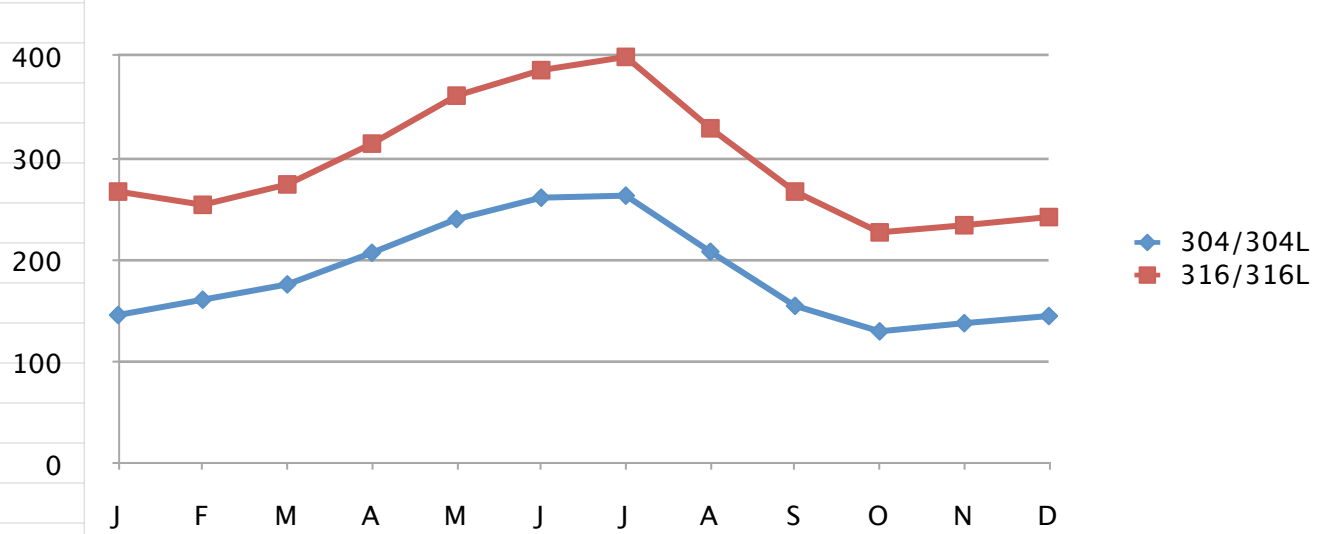
	15-5	174/630	300
M	\$108.00	\$95.00	\$85.00
A	\$127.00	\$100.00	\$88.00
M	\$129.00	\$116.00	\$103.00
J	\$124.00	\$119.00	\$112.00
J	\$122.00	\$117.00	\$109.00
A	\$122.00	\$113.00	\$120.00
S	\$121.00	\$113.00	\$114.00
O	\$148.00	105	96
N	\$112.00	\$107.00	\$87.00
D	\$53.00	\$66.00	\$52.00



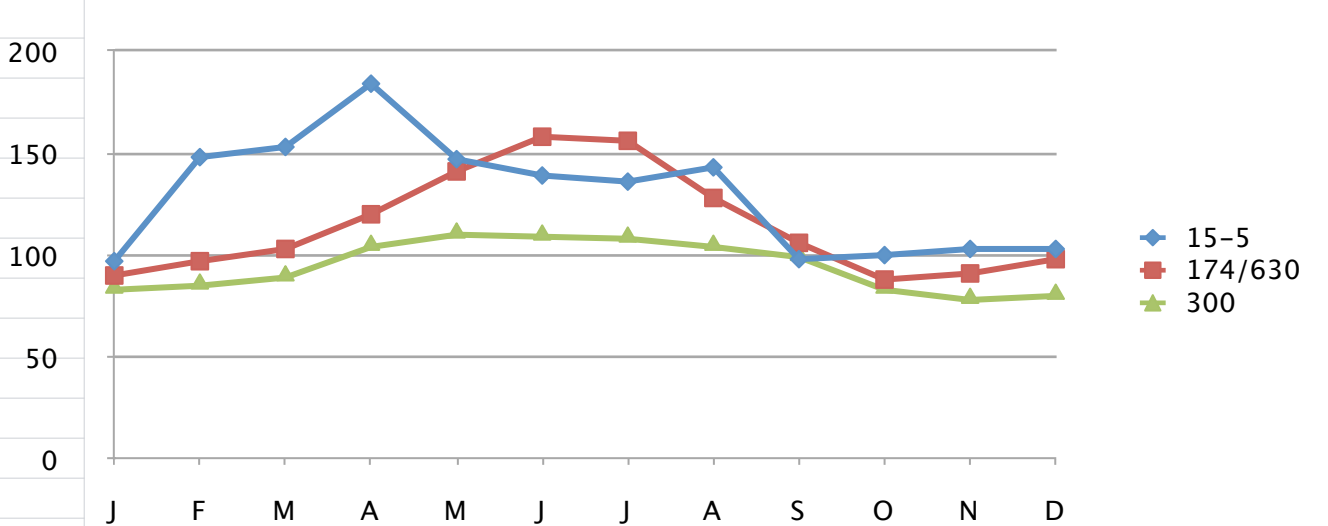
Flat rolled Surcharge			
	304L	316L	410S
J	149	244	11
F	163	260	12
M	179	282	13
A	204	313	15
M	235	357	20
J	250	374	21
J	250	380	18
A	202	318	22
S	161	263	22
O	\$134.00	\$231.00	\$20.00
N	140	236	21
D	\$143.00	\$237.00	\$23.00



BAR SURCHARGES		
	304/304L	316/316L
J	146	\$267.00
F	161	254
M	176	274
A	207	314
M	240	361
J	261	386
J	263	399
A	208	\$329.00
S	\$155.00	\$267.00
O	\$130.00	\$227.00
N	\$138.00	\$234.00
D	\$145.00	\$242.00



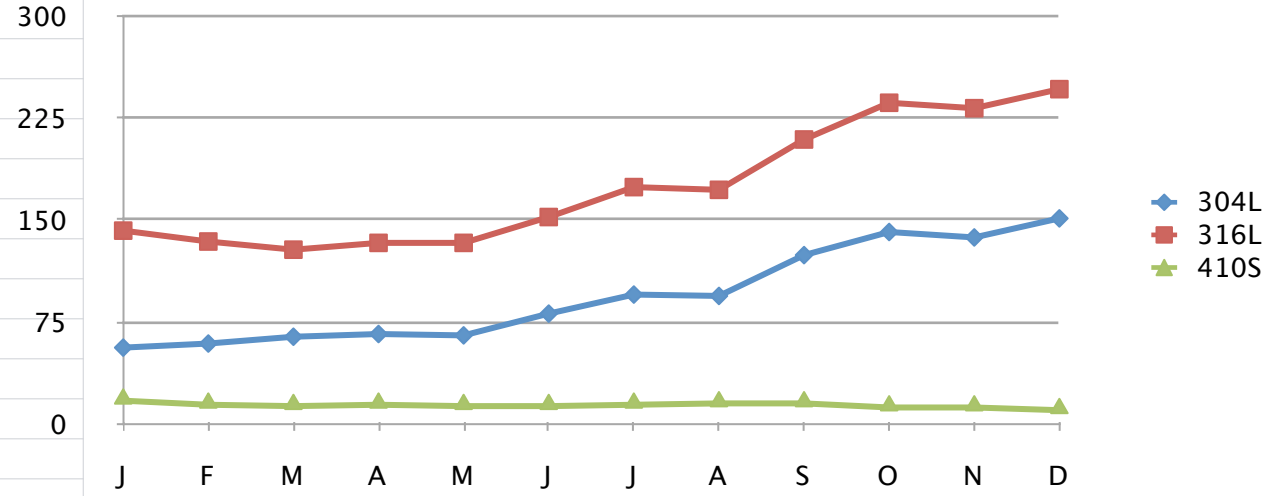
ALLOY SURCHARGES			
	15-5	174/630	300
J	97	90	83
F	\$148.00	97	85
M	\$153.00	103	89
A	\$184.00	120	104
M	\$147.00	141	110
J	\$139.00	158	109
J	\$136.00	156	108
A	\$143.00	128	104
S	\$98.00	106	99
O	\$100.00	\$88.00	\$83.00
N	\$103.00	\$91.00	\$78.00
D	\$103.00	\$98.00	\$80.00



FLAT BAR SURCHARGES

	304L	316L	410S
J	56	142	17
F	59	134	14
M	64	128	13
A	66	133	14
M	65	133	13
J	81	152	13
J	95	174	14
A	94	172	15
S	124	209	15
O	141	236	12
N	137	232	12
D	151	246	10

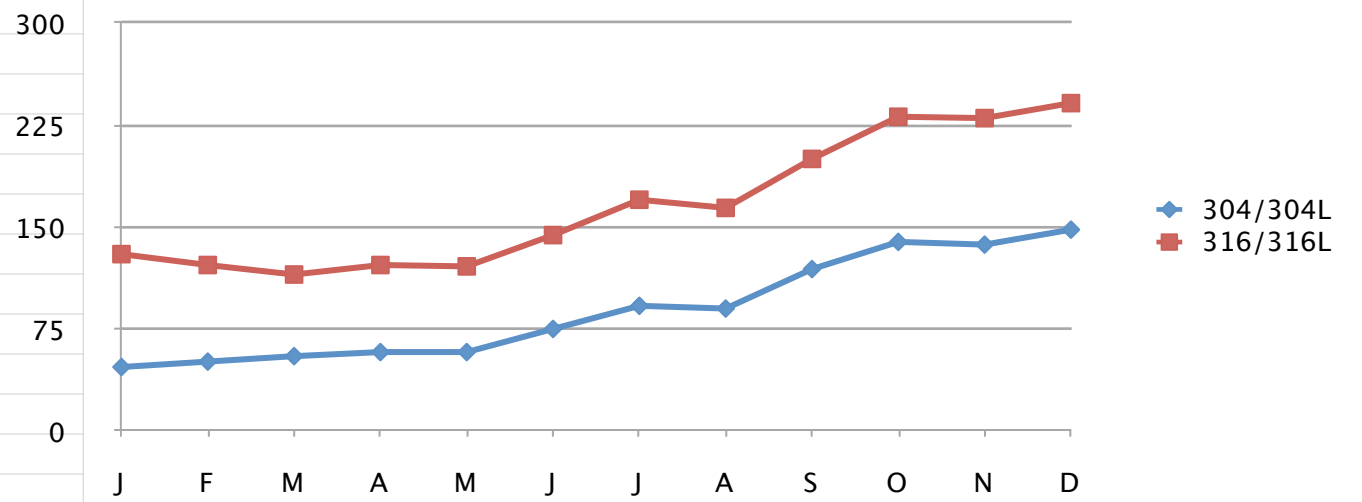
300



BAR SURCHARGES

	304/304L	316/316L
J	47	130
F	51	122
M	55	115
A	58	122
M	58	121
J	75	144
J	92	170
A	90	164
S	119	200
O	139	231
N	137	230
D	148	241

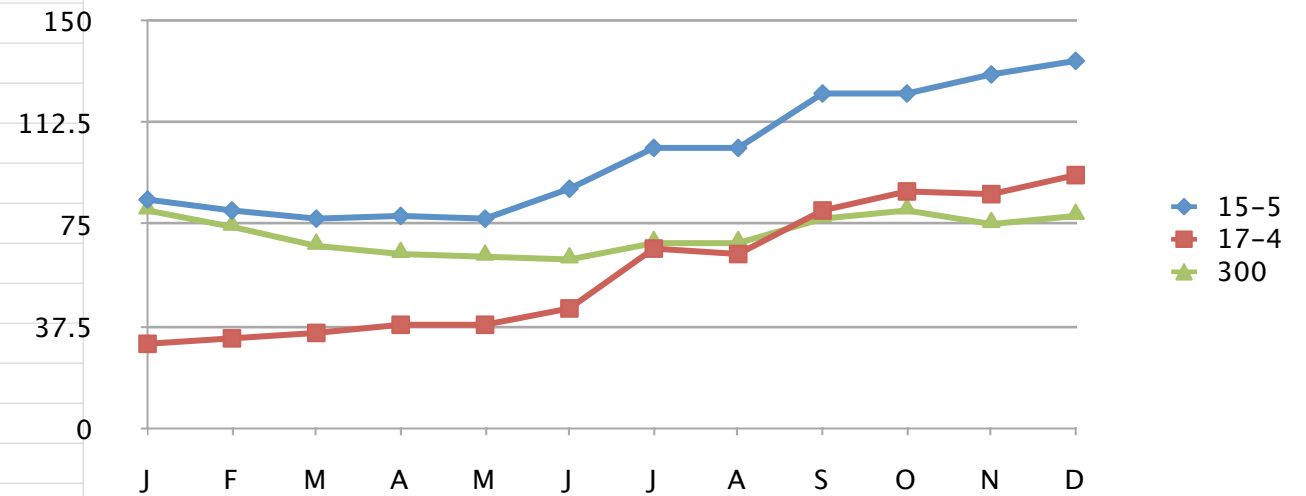
300



ALLOYS SURCHARGES

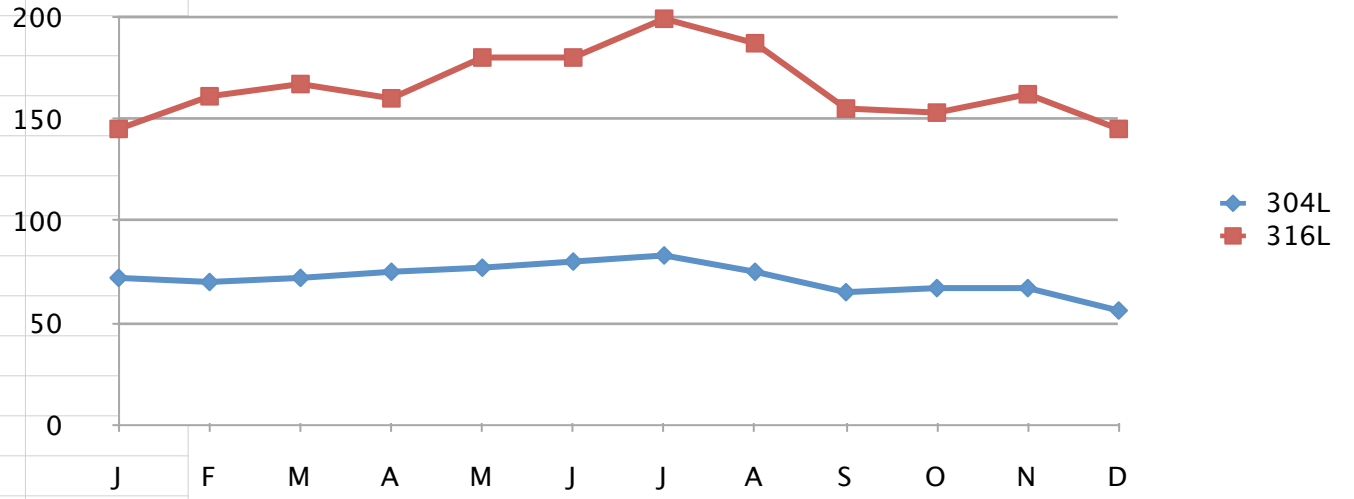
	15-5	17-4	300
J	84	31	80
F	80	33	74
M	77	35	67
A	78	38	64
M	77	38	63
J	88	44	62
J	103	66	68
A	103	64	68
S	123	80	77
O	123	87	80
N	130	86	75
D	135	93	78

150



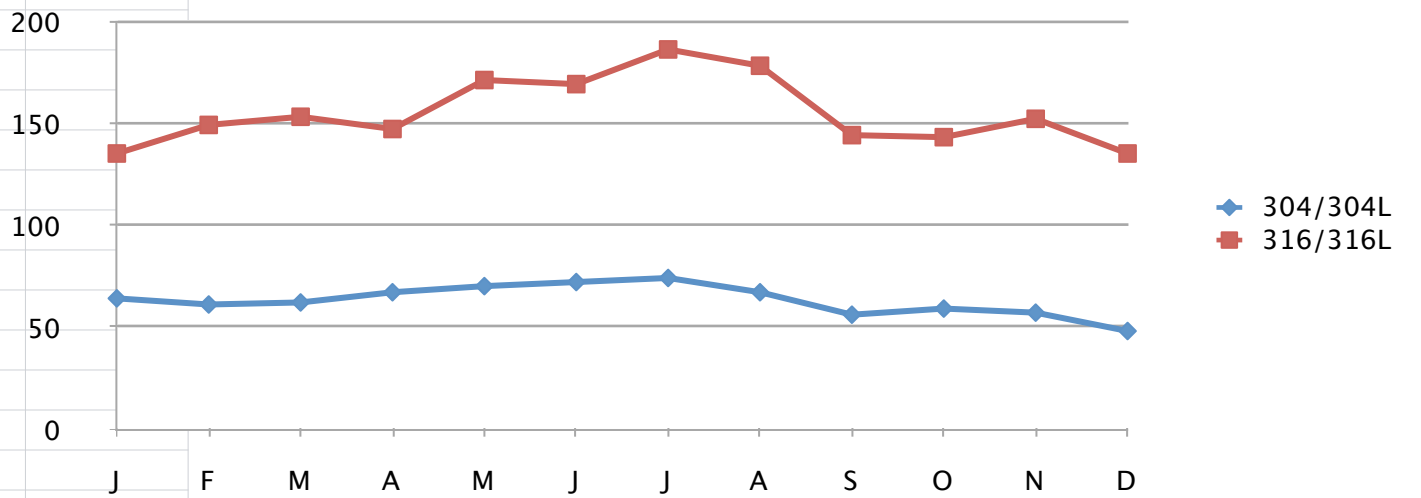
Flat rolled Surcharge

	304L	316L
J	72	145
F	70	161
M	72	167
A	75	160
M	77	180
J	80	180
J	83	199
A	75	187
S	65	155
O	67	153
N	67	162
D	56	145



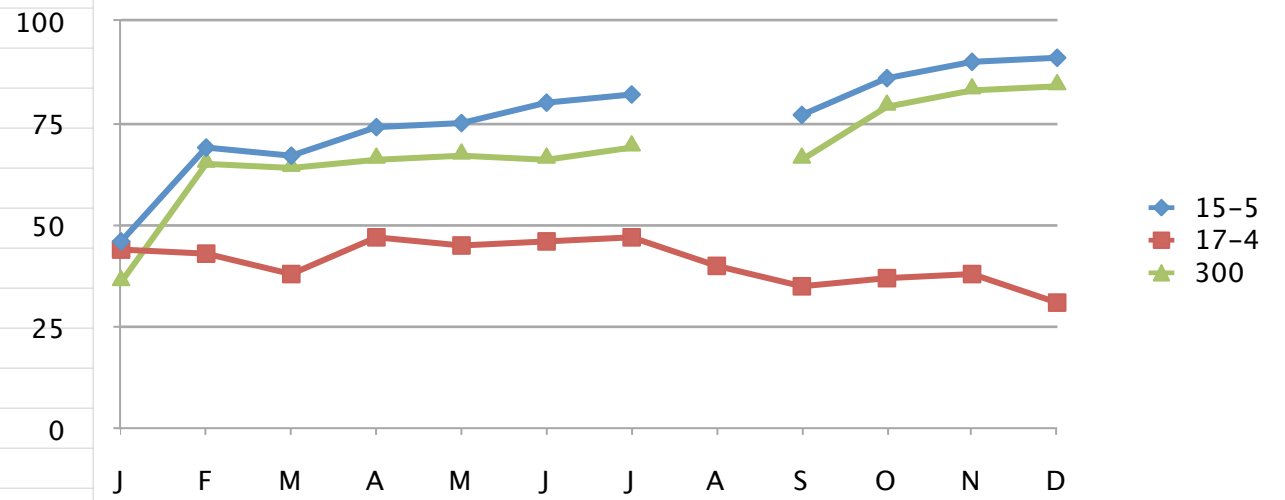
BAR SURCHARGES

	304/304L	316/316L
J	64	135
F	61	149
M	62	153
A	67	147
M	70	171
J	72	169
J	74	186
A	67	178
S	56	144
O	59	143
N	57	152
D	48	135



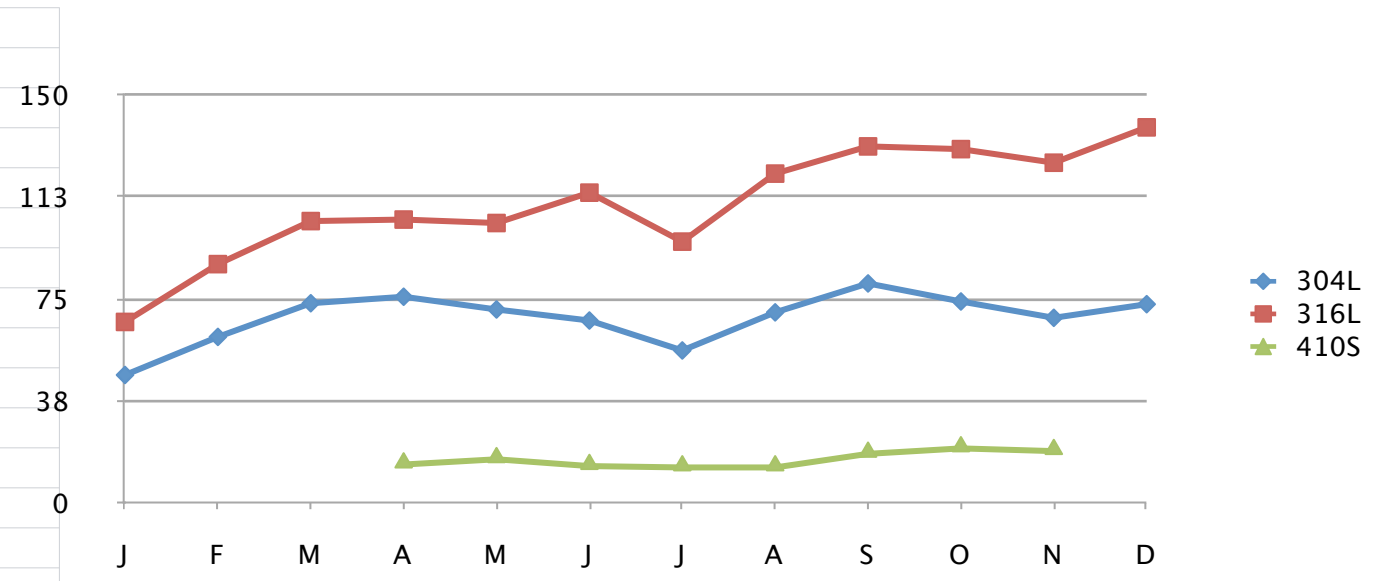
ALLOYS SURCHARGE

	15-5	17-4	300
J	46	44	36
F	69	43	65
M	67	38	64
A	74	47	66
M	75	45	67
J	80	46	66
J	82	47	69
A		40	
S	77	35	66
O	86	37	79
N	90	38	83
D	91	31	84



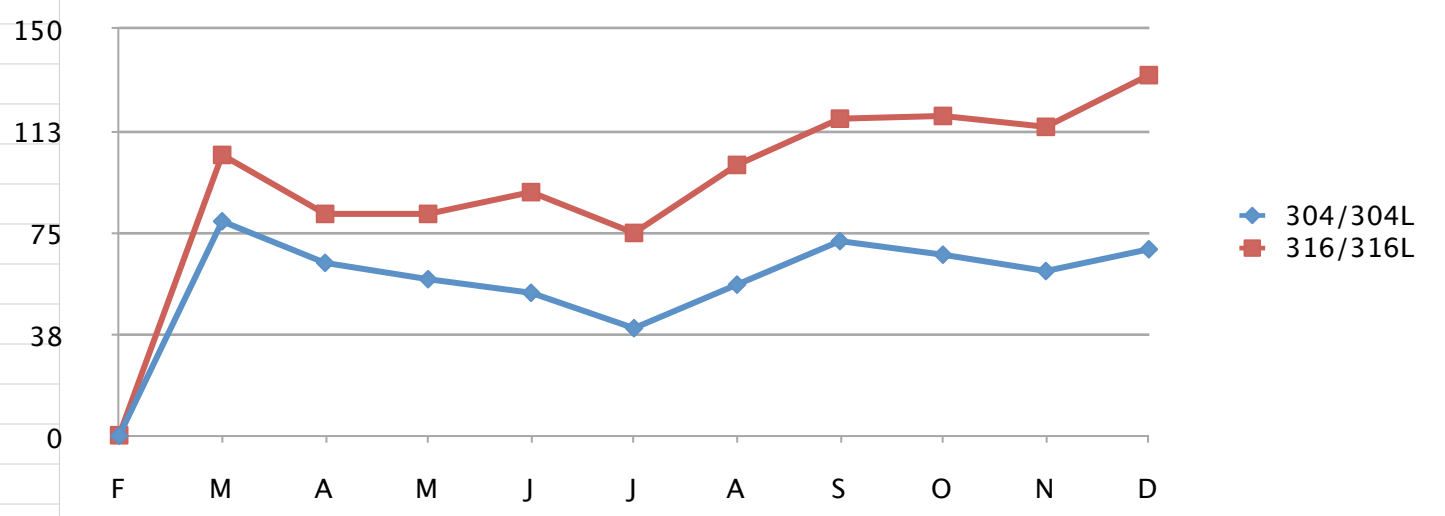
FLAT ROLLED SURCHARGE

	304L	316L	410S
J	46.98	66.48	
F	60.98	87.73	
M	73.35	103.55	
A	75.74	104.11	14.07
M	71.06	102.84	16
J	67	114	13.5
J	56	96	13
A	70	121	13
S	80.63	131	18
O	74	130	20
N	68	125	19
D	73	138	



BAR SURCHARGES

	304/304L	316/316L
F	0.47	0.65
M	79.28	103.67
A	64	82
M	58	82
J	53	90
J	40	75
A	56	100
S	72	117
O	67	118
N	61	114
D	69	133



ALLOYS SURCHARGE

	15-5	17-4	300
J	54.8	38.36	35.62
J	51	27	35
A	42	40	26
S	50	48	30.58
O	65	45	49
N	44	42	32
D	65	44	54

